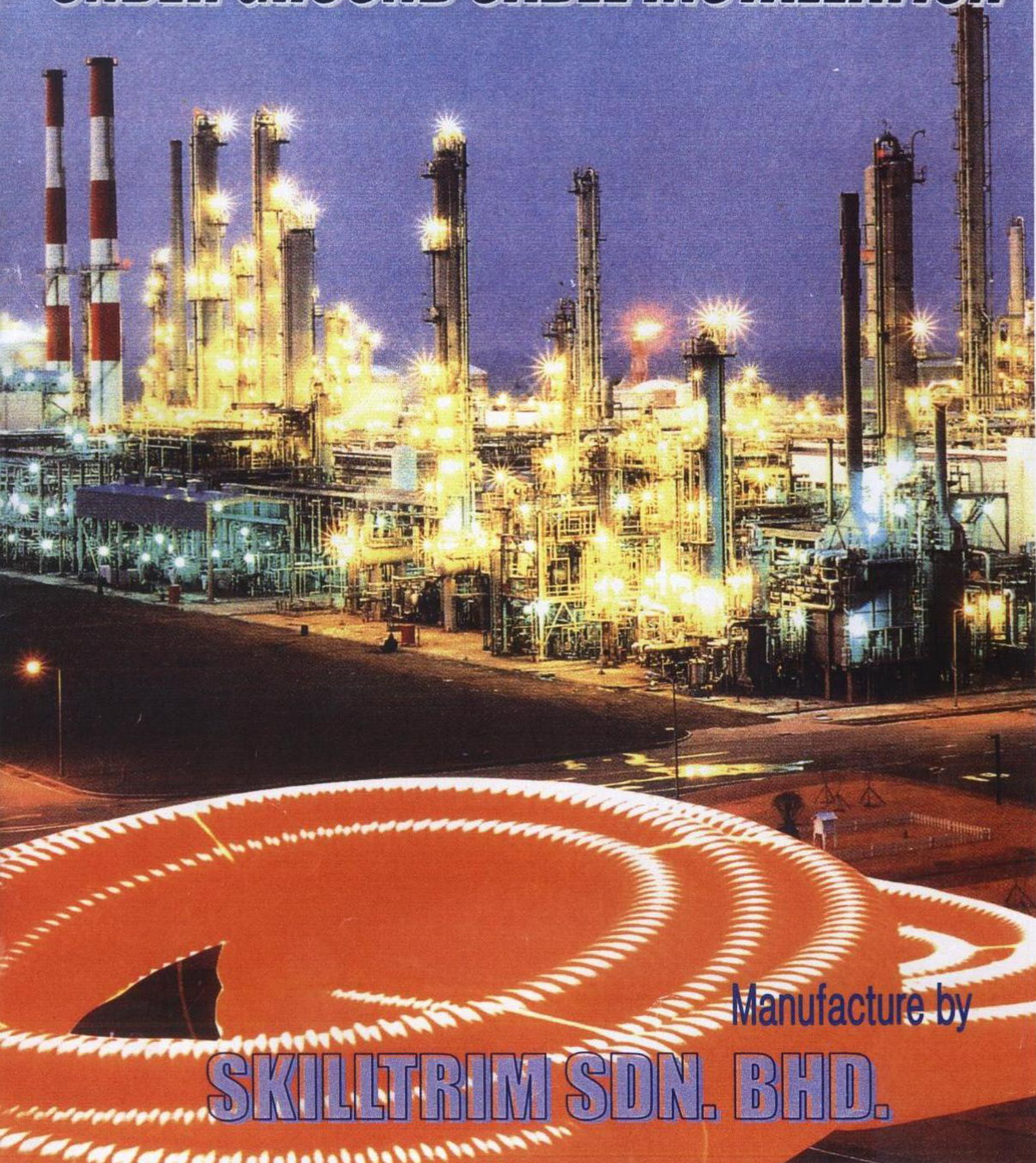


H.D.P.E CORRUGATED PIPE FOR UNDER GROUND CABLE INSTALLATION



Manufacture by

SKILLTRIM SDN. BHD.

H.D.P.E Double Wall Corrugated

The Highest Degree of Outside
Pressure-Applied

Completely

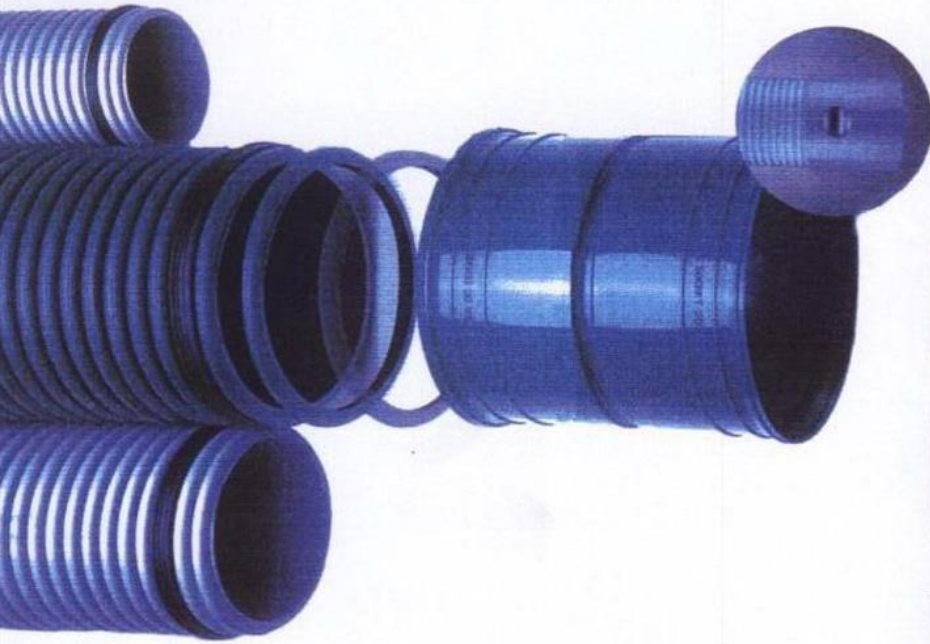
Environmentally

Lasting Quality

Chemical

Top Quality

Easy and Economical



HDPE Single wall Corrugated Pipe for cable protection

HDPE Single wall Corrugated pipe in stock are in many sizes ranging from 25mm to 200mm Ready to delivery upon request.



Finished Goods



Finished Goods ready for delivery

The standard dimensions of HDPE Single wall Corrugated pipe are as shown in the table below.

A pilot wire is provided inside the HDPE corrugated pipe in the course of its production.

It is connected with the cable pilot wire to pull the cable into the pipe.

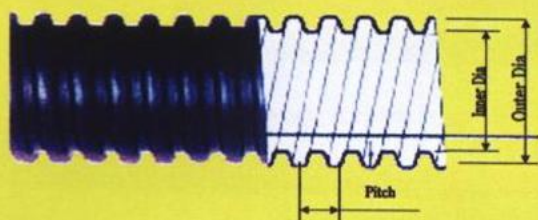
HDPE Corrugated pipe is shipped from the factory, wound in a coil.

A pilot wire has an allowable tensile strength of 50kg.



Unloading of HDPE Corrugated pipe

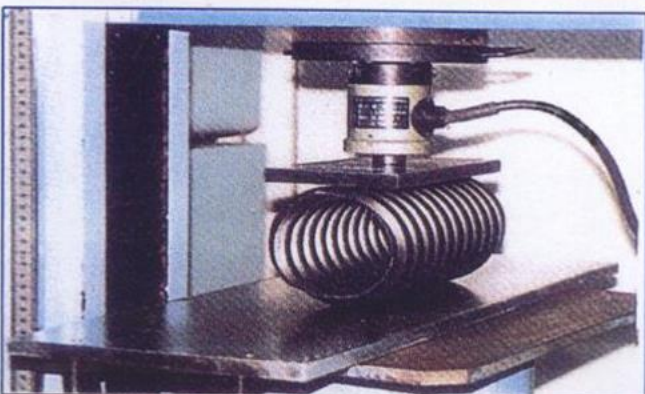
Standard Size of HDPE Corrugated pipe



Size	Inner Dia(d) (mm)	Outer Dia(D) (mm)	Pitch (mm)	Roll Size D×Width(m)	Unit Length (m)
30	30± 2.0	40 ±2.0	10±0.5	1.2×0.55	100
40	40± 2.0	50.3±2.0	13±0.8	1.4×0.6	100
50	50± 2.5	64.5±2.5	17±1.0	1.6×0.7	100
65	65± 2.5	84.5± 2.5	21±1.0	1.7×0.7	100
80	80± 3.0	105 ±3.0	25±1.0	1.8×0.7	100
100	100± 4.0	130 ±4.0	30±1.0	2.0×0.8	100~60
125	125± 4.0	160 ±4.0	38±1.0	1.7×1.1	50
150	150± 4.0	188 ±4.0	45±1.5	1.8×1.2	50
175	175± 4.0	230 ±4.0	55±1.5	2.1×1.2	30
200	200± 4.0	260 ±4.0	60±1.5	2.3×1.2	30



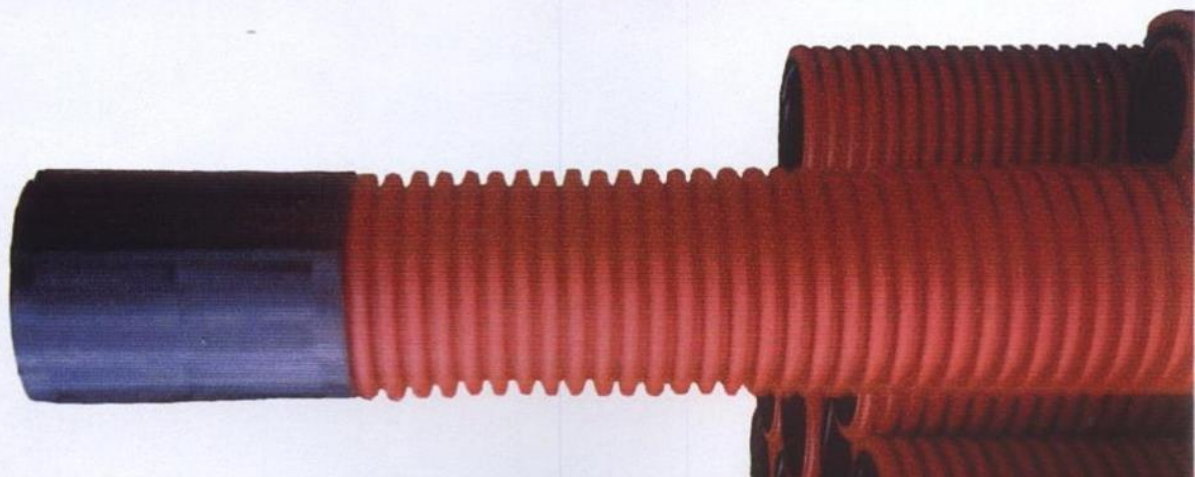
Underground Installation



Compression Withstand Test

H.D.P.E

*DOUBLE WALL CORRUGATED PIPE
FOR UNDERGROUND SYSTEM
IN PROTECTING CABLE*



HDPE Single wall Corrugated Pipe for cable protection

1. Good Flexibility

Flexibility obviates the use of bending tools in installation.

5. Scrap loss is minimized

As it is supplied in a coiled form of long length (50-100M), the scrap loss in installation is minimized.

2. Enough compression withstand

The corrugated structure of the pipe renders enough compression withstand which prevents any possible deformation arising out of external pressure.

6. Easy transportation and handling

Its weight is no more than one-seventh that of other kinds of pipes, which allows easy transportation and handling and obviates exhausting muscle exercise.

3. Excellent durability

As HDPE single wall corrugated pipe is made of polyethylene, it is resistant to chemicals and corrosion-resistant.

7. Safe from natural disasters

The harmonious combinations of its flexibility and compression withstand ability; it is safe from natural disasters such as earthquakes.

4. Easy to insert cables

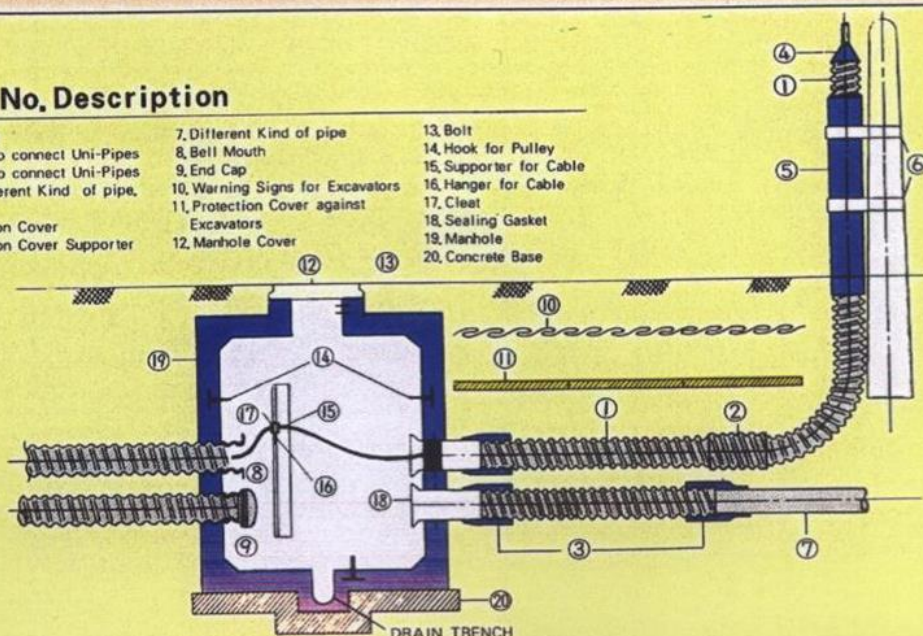
The internal surface of smooth wave forms of the corrugated pipe facilitates the insertion of cables by reducing friction.



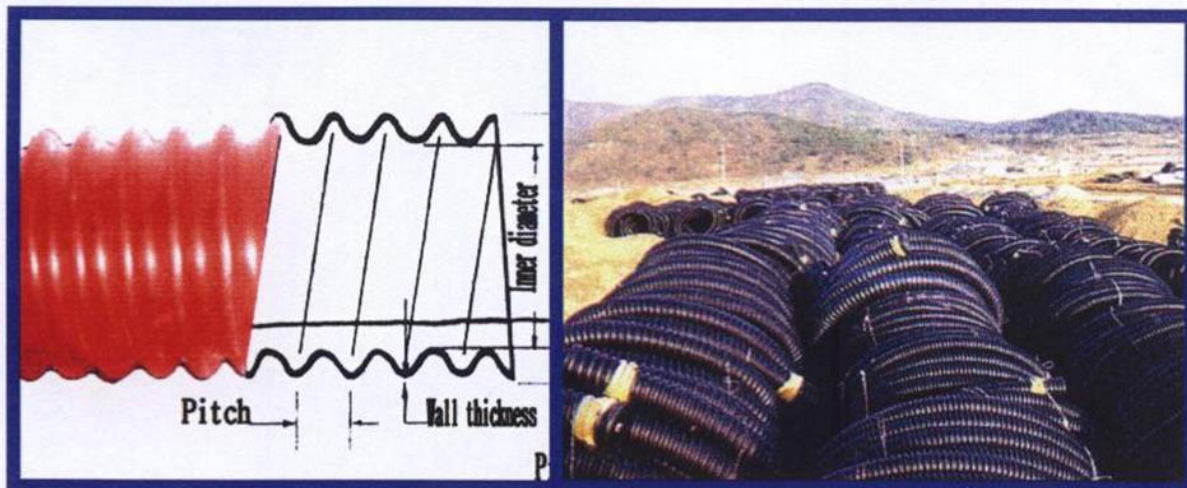
CUTAWAY VIEW OF TYPICAL INSTALLATION

Part No. Description

- | | | |
|---|---|-------------------------|
| 1. Uni-Pipe | 7. Different Kind of pipe | 13. Bolt |
| 2. Sleeve to connect Uni-Pipes | 8. Bell Mouth | 14. Hook for Pulley |
| 3. Sleeve to connect Uni-Pipes and Different Kind of pipe | 9. End Cap | 15. Supporter for Cable |
| 4. Sealant | 10. Warning Signs for Excavators | 16. Hanger for Cable |
| 5. Protection Cover | 11. Protection Cover against Excavators | 17. Cleat |
| 6. Protection Cover Supporter | 12. Manhole Cover | 18. Sealing Gasket |
| | | 19. Manhole |
| | | 20. Concrete Base |



H.D.P.E Corrugated Pipe in stock in many sizes
Ranging from O/D 30mm to O/D 200 mm – Ready to
delivery upon request.



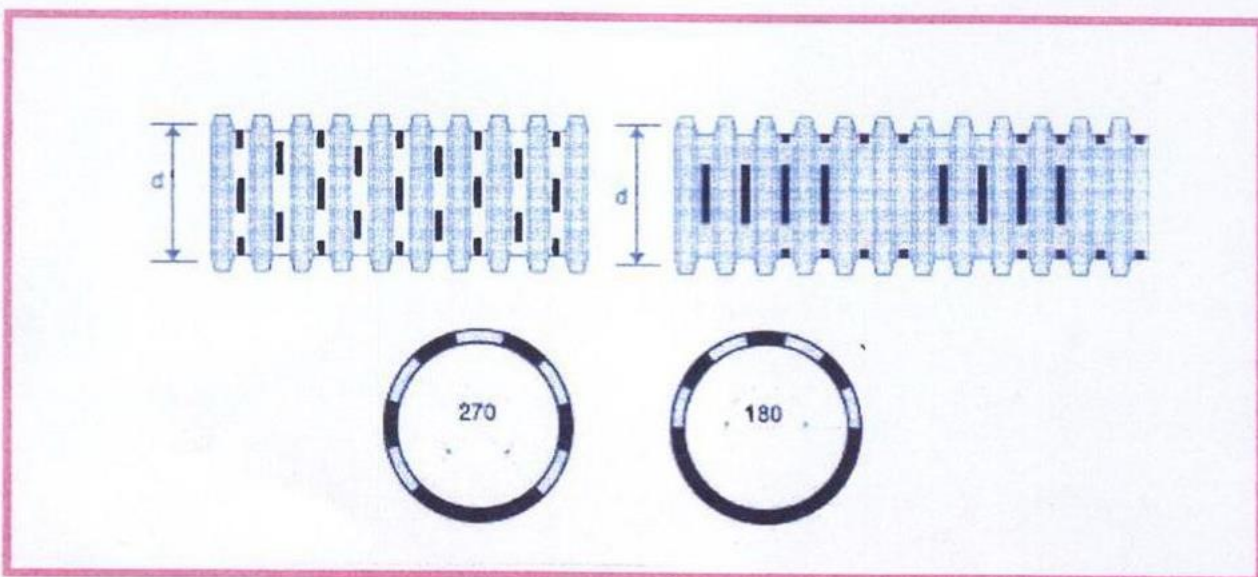
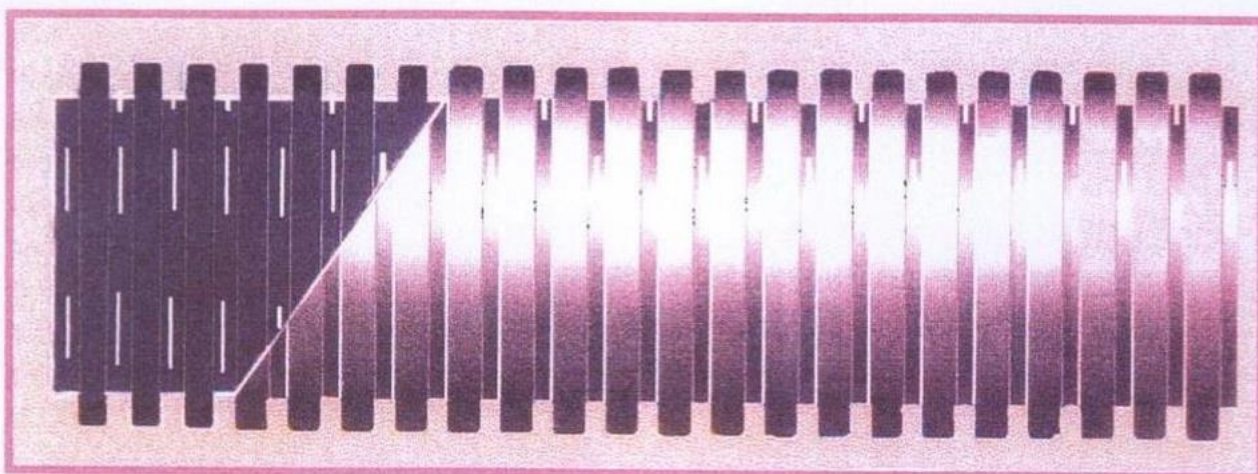
The standard dimensions of H.D.P.E Corrugated pipe are as shown in the table below. A pilot wire is provided inside the H.D.P.E Corrugated pipe in the course of its production. It is connected with the cable pilot wire to pull the cable into the pipe. H.D.P.E Corrugated pipe is, as a rule, shipped from the factory, wound in a coil. A pilot wire has an allowable tensile strength of 50kg.

Table of standard dimensions

Nominal Diameter (mm)	Outer Diameter (mm)	Inner Diameter (Mm)	Pitch (mm)	Wall Thickness (Class C) (mm)	Wall Thickness (Class B) (mm)	Wall Thickness (Class D) (mm)
30	40	30	10	1.5	1.0	2.0
50	65	50	17	1.5	1.0	2.0
80	105	80	25	2.0	1.5	2.5
100	130	100	32	2.0	1.5	2.5
125	160	125	40	2.5	2.0	2.5
150	190	150	47	3.0	2.5	3.5
200	250	200	62	4.0	3.5	4.5

* For future production

HDPE Double and Single Corrugated Subsoil Drainage Pipe



Product data

Dimensions		
Nominal diameter (mm)	150	100
Outer Diameter (mm)	171	115
Inner diameter (mm)	146	98
Number of slotted rows	(8) (5) (4)	(6) (4) (3)
Slot size (mm)	1.6 – 2.3 x 30	1.3 x 15
Coil weight (Kg)	42	35
Length of pipe per coil (m)	30	50

Rough guide for depth and spacing for subsoil pipes Vs Soil type

Soil type	Depth (m)	Spacing (m)	Soil permeability
Sand	0.6-0.9	15-23	High/medium
Loam	0.9-1.2	12-15	Medium/low
Clay	0.9-1.2	5-6	Low

1. The critical factor in determining maximum drain depth is the depth of the impermeable soil layer. Spacing can differ depending on the soil texture.

2 A filter sock can be used to prevent the sediment from entering the drainline in some fine sand and coarse soils.

HDPE Double and Single Corrugated Subsoil Drainage Pipe

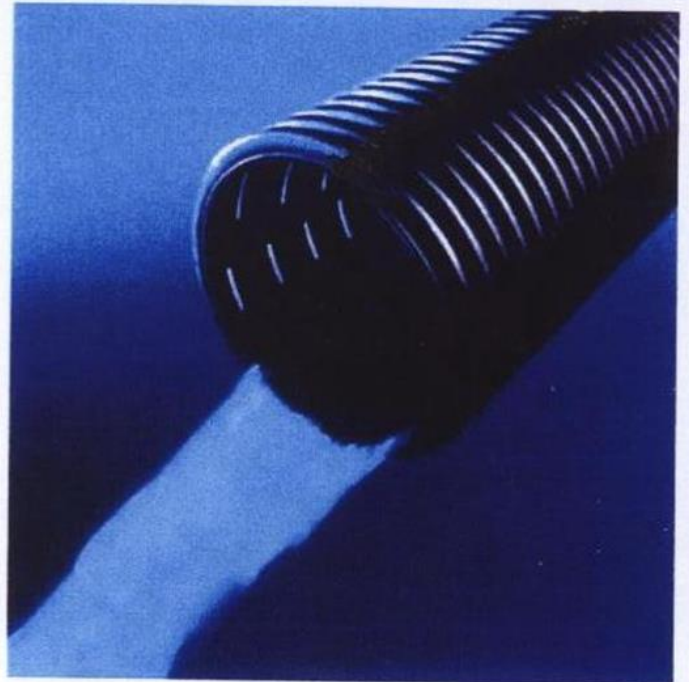
HDPE Double and Single wall Corrugated Slotted Drainage Pipe

HDPE Double & Single wall drainage pipe has an innovative double & Single wall sandwich construction, with a corrugated outer wall and a smooth and corrugated inner wall. This combines high ring stiffness with excellent flow characteristics. It is available in 6m lengths 12m lengths. And 30m coils.

Rows of water in slots are symmetrical

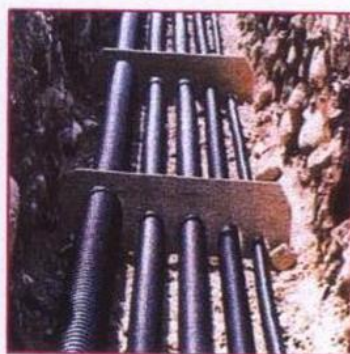
to the pipe with a flow channel at the bottom. The high infiltration area combined with the thin inner wall structure ensures optimum water intake.

The slots are protected in the valleys of the corrugated structure which reduces the possibility of blocking. The inner wall with an extremely low roughness results in greater flow rates, allowing the utilization of smaller diameter pipes.



Impact resistance

As Double and single wall corrugated pipe is manufactured from HDPE it is extremely tough and durable. This facilitates handling and minimizes breakages. It has excellent impact strength far exceeding the requirements of BS EN50086-2-4:1994 standard HDPE subsoil and multi-purpose drain pipes



Compressive strength

HDPE Corrugated double and Single wall pipe correctly bedded and side filled with filter material form a complete pipe soil system. This can withstand heavy loads.



UV resistance

HDPE double and Single wall corrugated pipe is UV stabilized and can be stored outdoors for one year.



Chemical resistance

HDPE double and Single wall corrugated pipe is manufactured from HDPE (High Density Polyethylene), which is one of the most chemically resistant polymers. It is unaffected by acids or alkalis in the most aggressive soils and effluents. A detailed chemical resistance specification is available on request.