

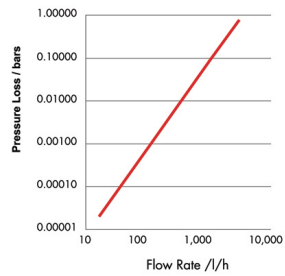
GKM PSM Volumetric Cold Potable Water Meters

Specifications Class C to ISO4064

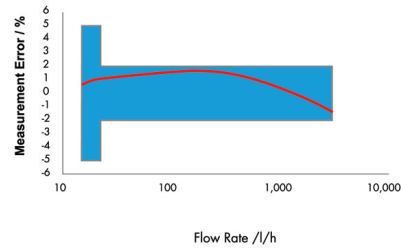
Meter size (mm)			15	20	25	30	40
Overload flow rate	qs±2%	m³/h	3	5	7	12	20
Permanent flow rate	qp±2%	m³/h	1.5	2.5	3.5	6	10
Transitional flow rate	qt±2%	l/h	22.5	37.5	52.5	90	150
Minimum flow rate	qmin±5%	l/h	15	25	35	60	100
Starting flow (approximate)		l/h	2.0	2.0	13.2	22.5	37.5
Output pulse		Litre/pulse	0.5	0.5	5	5	5
Meter diameter		mm	86	86	104	120	158
Meter length alternative		mm	115	165	199	199	300
Length over connectors		mm	200	267	311	327	421
Weight – Meter only (approximate)		kg	0.80	1.30	1.30	2.20	3.70

Example: N1.5 - 15mm

TYPICAL PRESSURE LOSS CURVE



TYPICAL ACCURACY CURVE



Approvals

- EEC approved
- SIRIM approved
- SPAN approved



George Kent (Malaysia) Berhad (1945-X)

Lot 1115, Batu 15, Jalan Dengkil,
47100 Puchong, Selangor Darul Ehsan, Malaysia.
Tel : +603-80648000
Fax : +603-80619926
Website: www.georgekent.net

Agent/ Representative

The Company policy is one of continuous improvement and the right is reserved to modify the specifications without prior notice

The Kent Range of Domestic Meters

GKM PSM Volumetric Cold Potable Water Meters



The World's Favourite Domestic Water Meter



George Kent

GKM PSM Volumetric Cold Potable Water Meters

- The world's biggest selling domestic water meter
- Optimum accuracy and performance at all times, in any position.
- Revolutionary grooved piston for improved durability and performance
- Durable tamperproof construction
- Full range of sizes from 15mm to 40mm
- Water temperatures up to 50°C
- Maximum working pressure of 16 bar
- Pulse output available providing access to management information.



The GKM PSM is the world's favourite domestic water meter, with over 50 million already in service in over 100 countries, and offers accuracy, long life, low maintenance and tamperproof operation.

Available in sizes from 15mm to 40mm, with flow rates between 7.5l/h to 20m³/h, GKM PSM meters offer unrivalled performance to ISO4064 class C.

In addition, the meters can provide valuable management information via a probe pulse unit upgrade.

Unrivalled accuracy in any position, for any flow

Due to the volumetric rotary piston measurement principle, the GKM PSM meters can achieve the highest levels of reading accuracy even at a lowest flow rate. The meter can be installed in any position: horizontally, vertically or inclined pipelines, maintaining optimum performance with no loss of accuracy.

Robust, leak-proof construction

The use of advanced engineering plastics for the meter's measuring chamber significantly reduces wear and helps maintain reliable, accurate measurement over all operating conditions. Solid particles are gathered by a large surface area strainer, further preventing damage; and a body 'O ring' seal between the measuring chamber and meter body ensures that internal leaks which could by-pass the measuring chamber are eliminated.

Easy to read

Fully sealed and liquid filled, the meter's counter offers simple, straight-reading presentation. The number rollers are completely immersed in a lubricating non-toxic liquid, and a sac attached to the counter casing acts as a balancing membrane, ensuring the pressure of the liquid in the counter equals that of the external water. The counter window is inside the meter body in the direction of flow for easy reading.

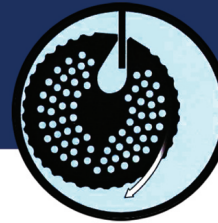
Tamperproof operation

The GKM PSM offers unrivalled resistance to illegal tampering: its unique conical body-half design eliminates the risk of disassembly whilst in service and the mechanically driven cyclometer-type counter is resistant to magnetic interference.

An optional return reverse flow restrictor provides further protection against outside interference, preventing the meter being operated in the reverse direction to reduce the reading. The restrictor cannot be removed without destroying the seal and opening the meter.

Revolutionary grooved piston

Meter stoppages are substantially reduced, durability enhanced and performance improved as a result of a uniquely-designed grooved piston within the meter measuring chamber, increasing applications flexibility (available in 15mm and 20mm sizes).



Its action, with the stationary chamber wall, creates small flow eddies which hold solids in suspension until flushed out, reducing meter stoppages.

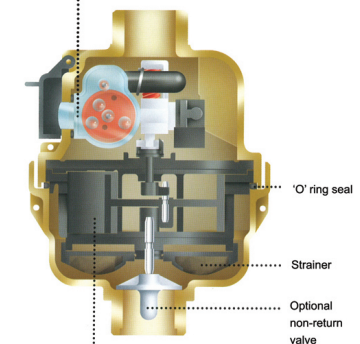
Reliability guaranteed

Every GKM PSM meter is individually tested over its flow range before dispatch, and is manufactured from the highest quality materials ensuring maximum resistance to wear and corrosion.

Powerful management information tool

Valuable management information can be obtained with the aid of a probe pulse unit, available on GKM PSM meters. The pulse unit provides important consumption and flow information on a temporary or permanent basis, allowing examination and analysis of consumption patterns and providing a valuable early detection of leaks. Volt-free probe pulsers provide output signals for interrogation by externally-powered reading devices and can be retro-fitted to any installed GKM PSM meters with the facility to install a probe pulse unit facility, at any time without interrupting the water supply.

Easy to read register



Grooved piston design gives long working life and reduces blockages