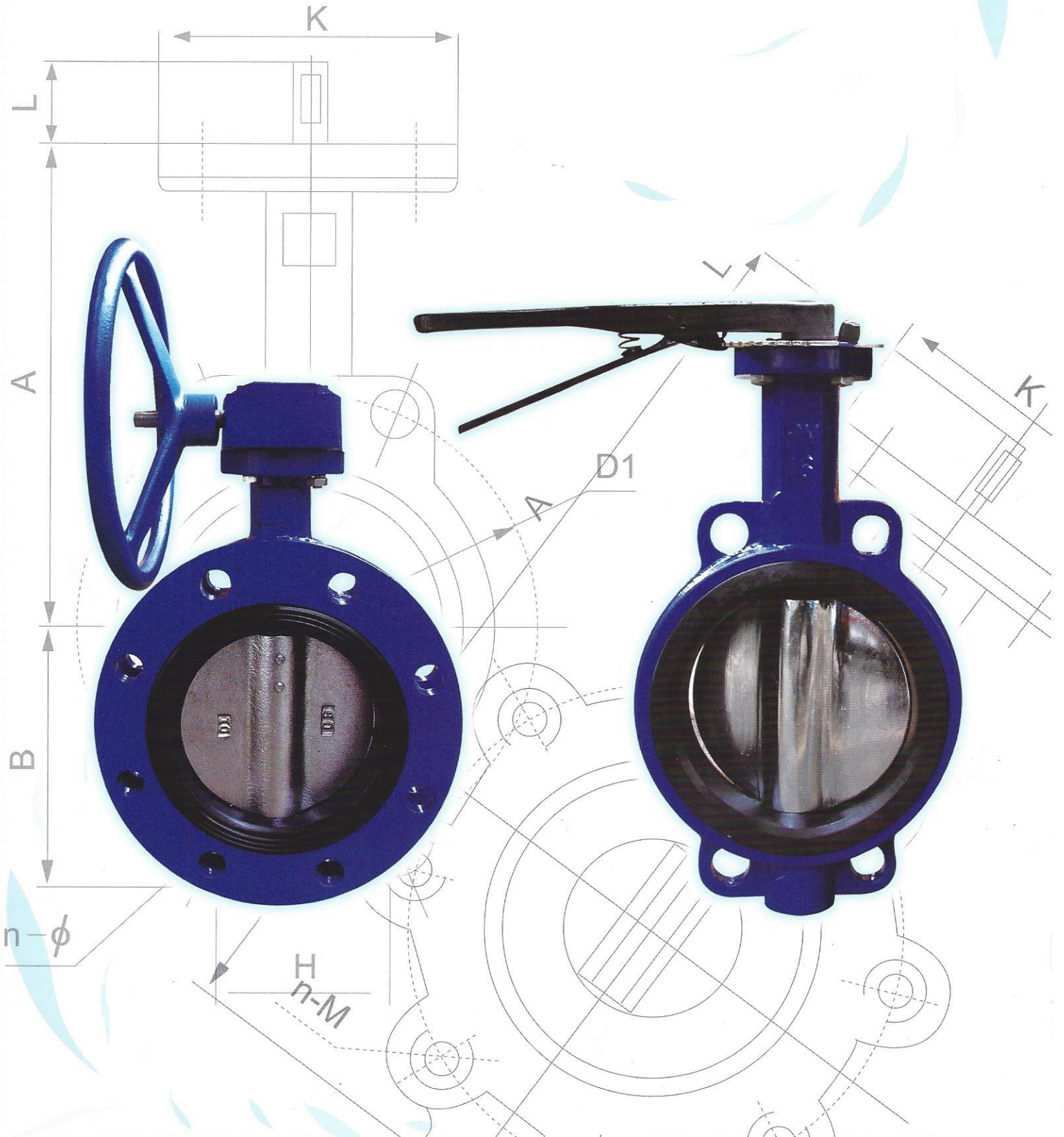
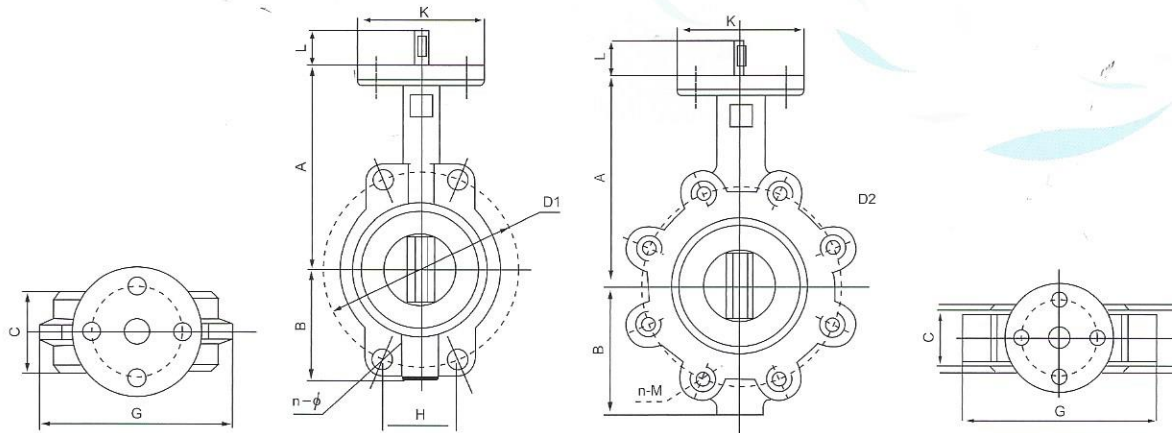


ALFRANTM

Butterfly Valves





DN		A	A**	B	B**	C	G Type A	G Type LT	K	L	D1 ^o	D2 ^o	n-φ ^o	n-M*	A/LT Weight (kg)
mm	Inch														
50	2"	161	130	80	70	42	100	121	90	30	120	125	4-18	4-M16	2.9/4
65	2 1/2"	175	136	90	78	44	120	138	90	30	136.2	145	4-18	4-M16	3.4/5
80	3"	181	140	95	92	48	127	146	90	30	160	160	8-18	8-M16	4.6/6
100	4"	200	152	114	106	52	156	206	90	30	185	180	8-18	8-M16	5.3/7.5
125	5"	213	170	127	121	56	190	234	90	30	215	210	8-18	8-M16	7.5/9
150	6"	226	186	139	140	56	212	262	90	30	238	240	8-23	8-M20	9.6/11
200	8"	260	202	175	170	60	268	313	90	32	295	295	8-23 12-23	8-M20 12-M20	15.5/16.5
250	10"	292	250	203	197	68	325	394	125	32	357	350 355	12-26	12-M20 12-M24	23.5/27
300	12"	337	293	242	233	78	403	468	125	32	407	400 410	12-26	12-M20 12-M24	35/38.5
350	14"	370		270		78	430	515	150	45	467	460 470	16-26	16-M24 16-M20	42.5/72
400	16"	400		300		86	485	580	175	51	515 525	515 525	16-30	16-M24 16-M27	52/90
450	18"	420		320		105	537	627	175	51	565 585	565 585	20-26 20-30	20-M24 20-M27	87/111
500	20"	480		360		130	592	696	197	64	620 650	620 650	20-26 20-33	20-M24 20-M30	98/123
600	24"	560		420		151	706	821	197	70	725 770	725 770	20-30 20-36	20-M27 20-M33	133/178

1. The asterisks identify the dimensions of the valves of different pressure grade PN10/PN16. The flanges of the butterfly valves accommodate all types of operations; manual, worm & gear, electric, hydraulic and pneumatic actuators.
2. Both Type A and Type LT valve have the same construction and performances, and are made of the same materials. The major difference between them is that the LT type can be joined between two pipes using ordinary hexagon-headed bolts or mounted on the pipe end.
3. A**B** short valve neck
4. The flanges can be as per DIN2501 PN10/PN16, BS4504 PN10/PN16, BS10 TABLE E, ANSI B16.1, JIS 10K.

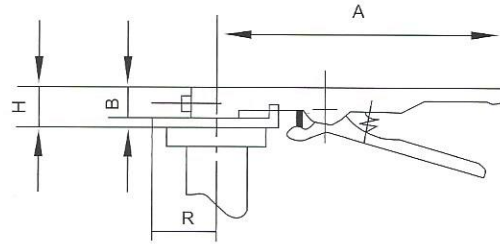
Butterfly Valves Technical Performance

Technical Data

Nominal Diameter (DN)	50-600	50-600	mm	
Nominal Pressure (PN)	1.0	1.6	MPa	
Testing Pressure	Body	1.5		2.4
	Sealing Test	1.1		1.76
Working Temperature	-10°C~150°C			
Applicable Medium	Freshwater, Sewage, Sea Water, Air, Vapour, Food, Medicine, Oils, Acids, Alkalis, Salts, etc.			

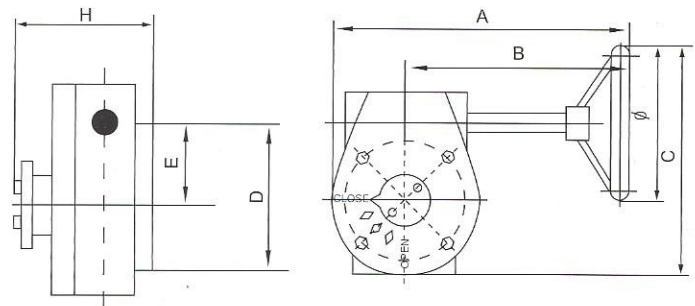
Dimension table of XS series handle

Model	DN	A	B	H	R	Weight (kg)
XS02	50-80	267	27	35	50	0.9
XS04	100-150	285	27	35	50	1.1
XS06	200-250	350	28	38	60	1.5
XS08	300	430	28	38	60	2.0



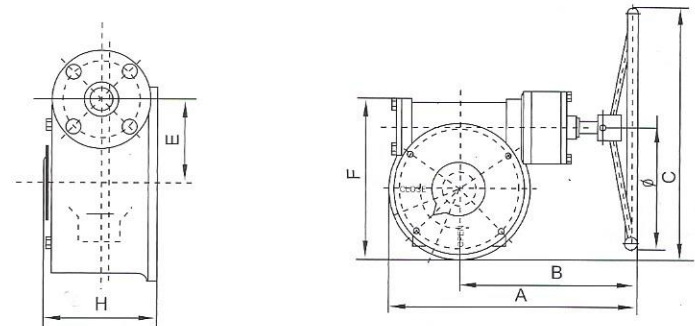
Dimension table of XJ series gear operator

Model	DN	A	B	C	E	H	∅	Output Torque (NM)	Weight (kg)
XJ24	50-80	201	148	249	45	75	150	170	5.2
	100						270	8.8	
	125-150						300	700	12.3
XJ30	200	315	238	300	63	85	300	1200	14.4
	250								
XJ50	300-350	310	226	310	78	86	300	2000	32.0
	400								



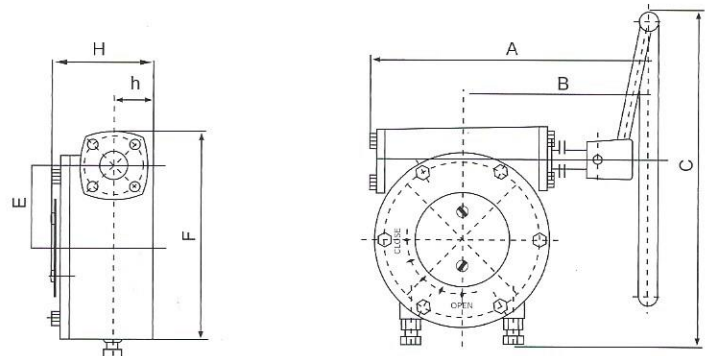
Dimension table of XJ series second-stage speed reducing gear operator

Model	DN	A	B	C	E	F	H	∅	Output Torque (NM)	Weight (kg)
XJ200	500	476	338	408	120	313	154	300	4000	48
	600								3000	



Dimension table of XGJ series gear operator with bearing

Model	DN	A	B	C	E	F	H	h	∅	Output Torque (NM)	Weight (kg)
XGJ80	400	470	342	467	120	310	120	55	400	2500	38
	450										
XGJ70	500	558	428	610	126	296	120	52	705	4500	45



Material of Main Parts

Item	Description	Standard Materials	Optional Materials
1	Body	Cast Iron	Ductile Iron
2	Seat	NBR or EPDM	Black or White Neoprene, Hypalon, Abrasion Resistant NBR, Low Temp or High Temp Viton, Food Grade EPDM, PTFE
3	Disc	Ductile Iron	Aluminum Bronze, 316 Stainless Steel
4	Shaft	410 Stainless Steel	304, 316 Stainless Steel
5	Key	Carbon Steel	None
6	O-Ring	NBR Lubricated	None
7	Bushing	Lubricated Bronze	Fiberglass Backed PTFE

Material	Temperature (C) °
NBR	-20~+120 C °
EPDM	-30~+135
Viton	-20~+120
Neoprene	-40~+100
NR	-35~+180

Cv (C) Value of Butterfly Valve

Size		Flow in Gpm@IPSIP@Various Disc Angles								Full/90° Open
(mm)	(inch)	10°	20°	30°	40°	50°	60°	70°	80°	
50	2"	0.1	5	12	24	45	64	90	125	135
65	2 1/2"	0.2	8	20	37	65	98	144	204	220
80	3"	0.3	12	22	39	70	116	183	275	302
100	4"	0.5	17	36	78	139	230	364	546	600
125	5"	0.8	29	61	133	237	392	620	930	1022
150	6"	2	45	95	205	366	605	958	1437	1579
200	8"	3	89	188	408	727	1202	1903	2854	3136
250	10"	4	151	320	694	1237	2047	3240	4859	5340
300	12"	5	234	495	1072	1911	3162	5005	7507	8250
350	14"	6	338	715	1549	2761	4568	7230	10844	11917
400	16"	8	464	983	2130	3797	6282	9942	14913	16388
450	18"	11	615	1302	2822	5028	8320	13168	19752	21705
500	20"	14	791	1674	3628	6465	10698	16931	25396	27908
600	24"	22	1222	2587	5605	9989	16528	25157	39236	43116

Valve Torques (kg/m)

Size	DRY		WET	
	14kgf/cm 200psi	10.5kgf/cm 150psi	14kgf/cm 200psi	10.5kgf/cm 150psi
2"	2.46	2.26	1.54	1.42
2 1/2"	3.33	2.97	1.75	1.57
3"	4.46	4.19	2.35	2.21
4"	7.42	6.91	4.06	3.78
5"	11.05	10.25	6.31	5.9
6"	17.76	16.84	10.45	9.57
8"	33.63	30.25	19.55	17.59
10"	55.95	49.55	32.91	29.15
12"	81.46	71.24	49.97	43.71
14"		84.15		56.1
16"		115.51		77.01
18"		154.79		
20"		206.5		137.66
24"		322.79		215.19