



Recognition of Quality

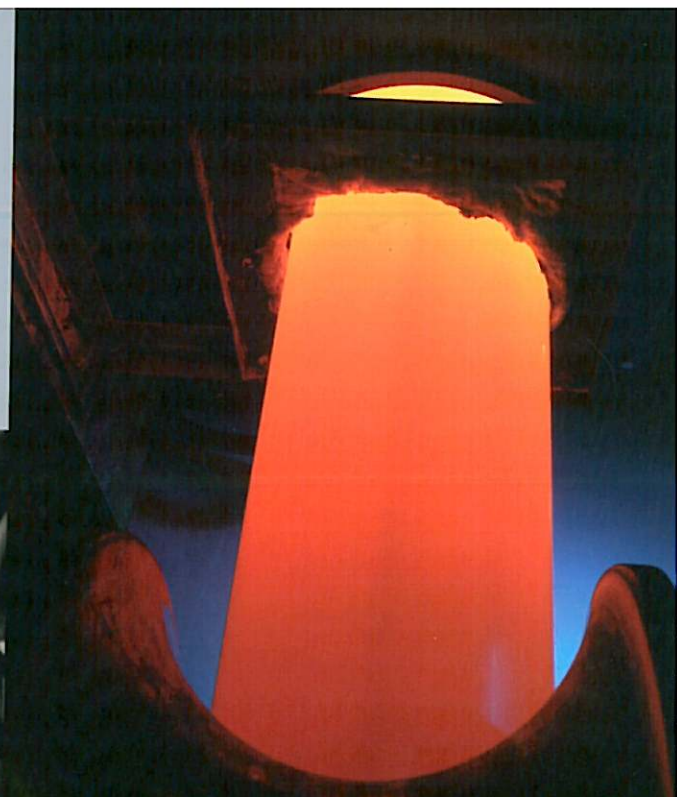
SUPERINOX pipes are of the utmost quality standards and have been accredited by various local and international accreditation bodies and authorities such as ISO 9001: 2008 Quality Management System, Quality-assurance System to DIN EN 10312: 2002 + A: 2005 and ISO/TS 29001: 2007 management systems for the petroleum, petrochemical and natural gas industries by **tüv** Nord of Germany.

SUPERINOX has also been awarded by the PED 97/23/EC Certificate by **tüv** Nord, Germany and Product Certificate by SIRIM QAS, IKRAM QAS, SPAN Malaysian Water Services Commission and all the Malaysian State Water-Works Authorities.

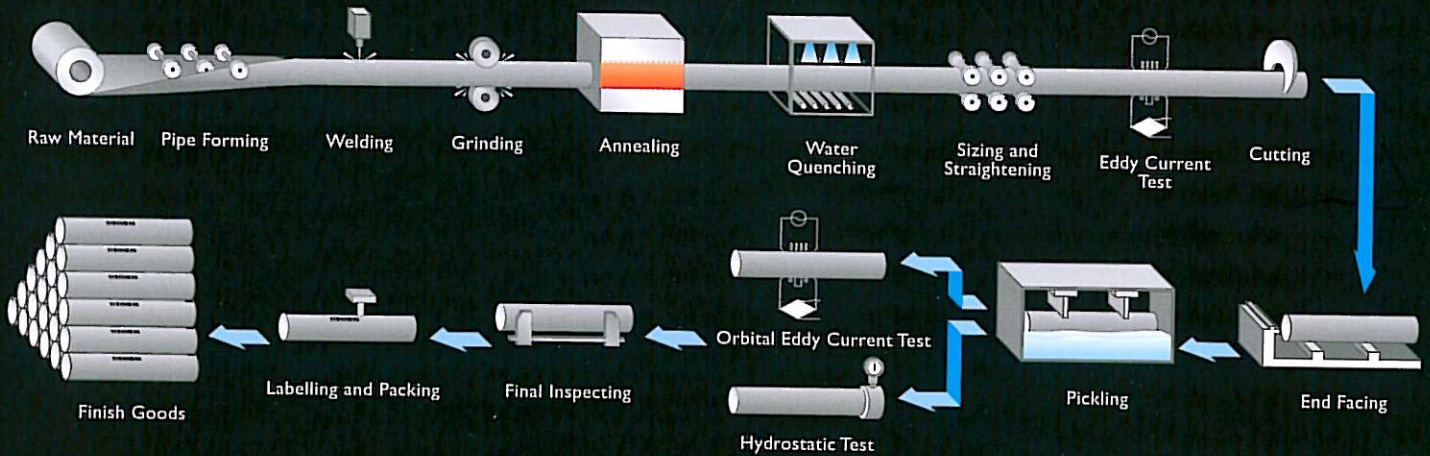


Manufacturing Process

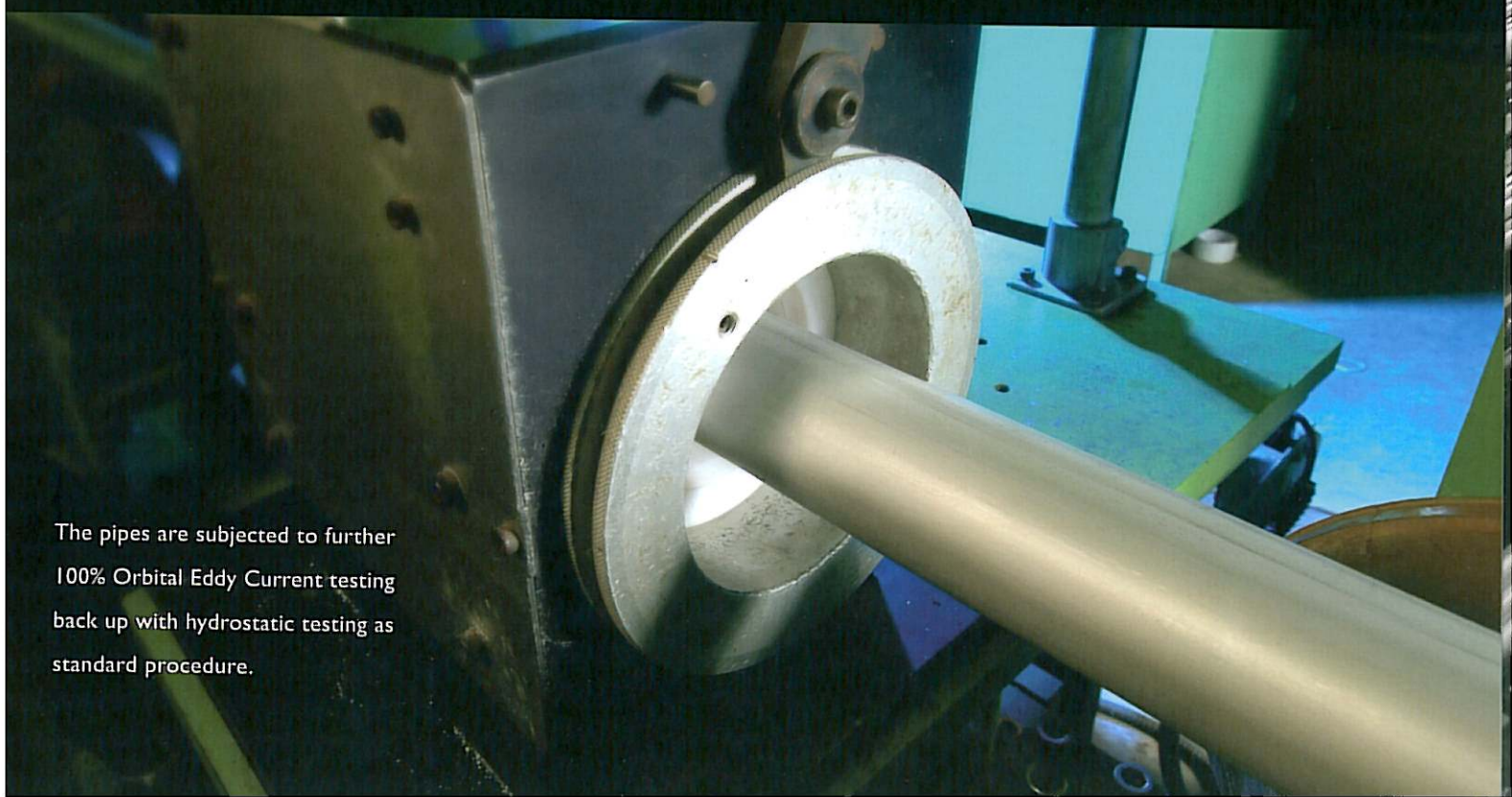
The manufacturing process utilizes the latest advance Tri-Cathode welding technology incorporating with Japanese designed on-line heat annealing furnace and on-line Eddy Current defect detector.



Production Process Flow Chart



The pipes are subjected to further 100% Orbital Eddy Current testing back up with hydrostatic testing as standard procedure.



Products Overview

Our Products are conform to ASTM A312, ASME SA312 and EN 10217-7 standard for Welded Austhenitic Stainless Steel Pipes.

ASTM A312 / ASME SA312 Standard Dimensions and Weight

Nom. Pipe Size Outside Diameter		SCH 5S			SCH 10S			SCH 40S		
		Wall Thickness (mm)	Weight (kg/m)		Wall Thickness (mm)	Weight (kg/m)		Wall Thickness (mm)	Weight (kg/m)	
Inch	mm		304/L	316/L		304/L	316/L		304/L	316/L
3/8	17.15	-	-	-	1.65	0.64	0.65	2.31	0.85	0.86
1/2	21.34	1.65	0.81	0.82	2.11	1.01	1.02	2.77	1.28	1.29
3/4	26.67	1.65	1.03	1.04	2.11	1.29	1.30	2.87	1.70	1.71
1	33.40	1.65	1.31	1.32	2.77	2.11	2.13	3.38	2.53	2.54
1 1/4	42.16	1.65	1.67	1.68	2.77	2.72	2.74	3.56	3.42	3.45
1 1/2	48.26	1.65	1.92	1.93	2.77	3.14	3.16	3.68	4.09	4.11
2	60.33	1.65	2.41	2.43	2.77	3.97	4.00	3.91	5.50	5.53
2 1/2	73.03	2.11	3.73	3.75	3.05	5.32	5.35	5.16	8.72	8.78
3	88.90	2.11	4.58	4.61	3.05	6.52	6.56	5.49	11.41	11.48
3 1/2	101.60	2.11	5.25	5.28	3.05	7.49	7.54	5.74	13.71	13.79
4	114.30	2.11	5.92	5.96	3.05	8.45	8.51	6.02	16.24	16.34
5	141.30	2.77	9.59	9.65	3.40	11.68	11.75	6.55	21.99	22.13
6	168.28	2.77	11.46	11.53	3.40	13.96	14.05	7.11	28.55	28.73
8	219.08	2.77	14.98	15.08	3.76	20.17	20.30	8.18	42.97	43.25
10	273.05	3.40	22.92	23.07	4.19	28.06	28.24	9.27	60.91	61.30
12	323.85	3.96	31.67	31.87	4.57	36.35	36.58	9.52	74.54	75.02
14	355.60	3.96	34.81	35.03	4.78	41.92	42.19	9.52	82.37	82.89
16	406.40	4.19	42.13	42.40	4.78	47.99	48.30	9.52	94.46	95.06

Chemical Composition

Specifications / Type	Chemical Composition % (Maximum unless range is shown)								
	ASTMA312	C	Si	Mn	P	S	Ni	Cr	Mo
TP304	0.080	1.00	2.00	0.045	0.030	8.00 - 11.00	18.00 - 20.00	-	-
TP304L	0.035	1.00	2.00	0.045	0.030	8.00 - 13.00	18.00 - 20.00	-	-
TP316	0.080	1.00	2.00	0.045	0.030	11.00 - 14.00	16.00 - 18.00	2.00 - 3.00	-
TP316L	0.035	1.00	2.00	0.045	0.030	10.00 - 14.00	16.00 - 18.00	2.00 - 3.00	-

EN 10217-7

Standard Dimensions

Thickness (mm)	1.2	1.6	2.0	2.3	2.6	2.9	3.2	3.6	4.0	4.5	5.0	5.6
OD (mm)												
13.5												
17.2												
21.3												
26.9												
33.7												
42.4												
48.3												
60.3												
76.1												
88.9												
101.6												
114.3												

Chemical Composition

Steel Grade		Chemical Composition % (Maximum unless range is shown)								
Symbol	Material Number	C	Si	Mn	P	S	ni	Cr	Mo	
X5CrNi1810	1.4301	0.07	1.00	2.00	0.045	0.015	8.00-10.50	17.00-19.50		
X2CrNi18-9	1.4307	0.03	1.00	2.00	0.045	0.015	8.00-10.00	17.00-19.50		
X5CrNiMo17122	1.4401	0.07	1.00	2.00	0.045	0.015	10.00-13.00	16.50-18.50	2.00-2.50	
X2CrNiMo17132	1.4404	0.03	1.00	2.00	0.045	0.015	10.00-13.00	16.50-18.50	2.00-2.50	



Typical Applications

Stainless Steel Tubes and Pipes are most widely used in industries such as:

- Water Works & Treatment
- Palm Oil Refinery
- Sugar Refinery
- Biodiesel Plants
- Cement Plants
- Paper & Pulp
- Food Processing
- Petrol-Chemical
- Pharmaceutical
- Air-Conditioning
- Marine Engineering
- Oil & Gas... Etc.

Stainless Steel Welded Square Tube ASTM A554

Size		Wall Thickness (mm)						
mm	inch	1.25	1.65	2.11	2.77	3.05	4.57	6.35
12.70 X 12.70	1/2 X 1/2							
19.05 X 19.05	3/4 X 3/4							
25.40 X 25.40	1 X 1							
31.75 X 31.75	1 1/4 X 1 1/4							
38.10 X 38.10	1 1/2 X 1 1/2							
50.80 X 50.80	2 X 2							
63.50 X 63.50	2 1/2 X 2 1/2							
76.20 X 76.20	3 X 3							
101.60 X 101.60	4 X 4							
127.00 X 127.00	5 X 5							
152.40 X 152.40	6 X 6							

Stainless Steel Welded Rectangular Tube ASTM A554

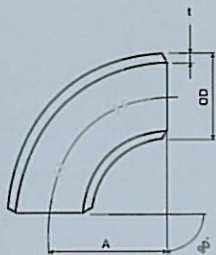
Size		Wall Thickness (mm)						
mm	inch	1.25	1.65	2.11	2.77	3.05	4.57	6.35
12.70 X 25.40	1/2 X 1							
12.70 X 38.10	1/2 X 1 1/2							
19.05 X 38.10	3/4 X 1 1/2							
25.40 X 38.10	1 X 1 1/2							
25.40 X 50.80	1 X 2							
25.40 X 76.20	1 X 3							
38.10 X 50.80	1 1/2 X 2							
38.10 X 76.20	1 1/2 X 3							
50.80 X 76.20	2 X 3							
50.80 X 101.60	2 X 4							
50.80 X 152.40	2 X 6							
63.50 X 127.00	2 1/2 X 5							
76.20 X 101.60	3 X 4							
76.20 X 127.00	3 X 5							
76.20 X 152.40	3 X 6							
101.60 X 152.40	4 X 6							

We can also produce other thickness as per requirement.

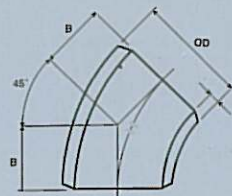
Surface Finish:

1. Mill finish
2. HL (grid 80/120/180)

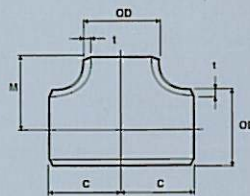
Stainless Steel Butt-Weld Pipe Fittings



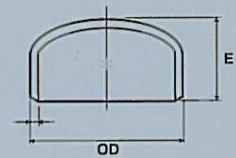
90° LONG RADIUS ELBOW



45° LONG RADIUS ELBOW



STRAIGHT TEE



END CAP

Stainless Steel Butt-Weld Pipe Fittings

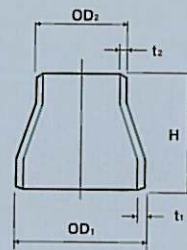
Dimension Tolerance

Nominal Pipe Size (inch)	ASTMA403		
	Outside Diameter (mm)	Nominal Wall Thickness (mm)	
		10S	40S
1/2	21.3	2.11	2.77
3/4	26.7	2.11	2.87
1	33.4	2.77	3.38
1 1/4	42.2	2.77	3.56
1 1/2	48.3	2.77	3.68
2	60.3	2.77	3.91
2 1/2	73.0	3.05	5.16
3	88.9	3.05	5.49
4	114.3	3.05	6.02
5	141.3	3.40	6.55
6	168.3	3.40	7.11
8	219.1	3.76	8.18
10	273.1	4.19	9.27
12	323.9	4.57	9.52
14	355.6	4.78	9.53
16	406.4	4.78	9.53

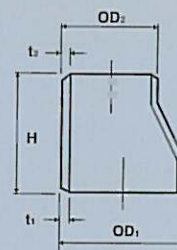
Weights

(unit: kg)

Nominal Pipe Size (inch)	SCH 10S				SCH 40S			
	90° Long Radius Elbow	45° Long Radius Elbow	Straight Tee	Cap	90° Long Radius Elbow	45° Long Radius Elbow	Straight Tee	Cap
3/4	0.078	0.039	0.129	0.052	0.103	0.052	0.258	0.059
1	0.128	0.064	0.223	0.090	0.154	0.077	0.262	0.109
1 1/4	0.206	0.103	0.356	0.113	0.260	0.130	0.463	0.145
1 1/2	0.283	0.142	0.497	0.130	0.368	0.184	0.648	0.171
2	0.478	0.239	0.681	0.168	0.652	0.326	0.893	0.234
2 1/2	0.812	0.406	1.200	0.242	1.370	0.683	1.980	0.420
3	1.140	0.571	1.570	0.362	2.040	1.020	2.610	0.664
4	1.970	0.985	2.460	0.585	3.840	1.920	4.760	1.170
5	3.420	1.710	4.040	0.978	6.480	3.240	7.840	1.900
6	4.870	2.430	5.500	1.350	9.940	4.970	9.540	2.830
8	10.000	5.010	11.070	2.490	20.100	10.100	19.560	5.110
10	15.500	7.770	19.870	3.840	35.400	17.700	32.610	8.920
12	25.900	12.500	27.860	6.150	56.200	28.100	56.650	14.100



CONCENTRIC REDUCER



ECCENTRIC REDUCER

Weights

(unit: kg)

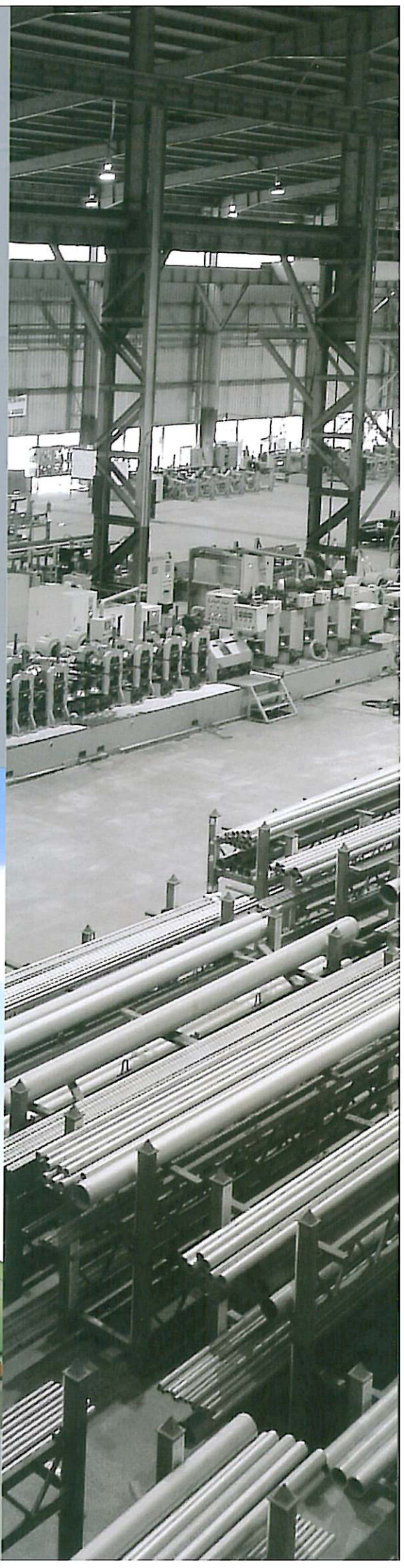
Concentric Reducer and Eccentric Reducer			Concentric Reducer and Eccentric Reducer		
Nominal Pipe Size (inch)	SCH 10S	SCH 40S	Nominal Pipe Size (inch)	SCH 10S	SCH 40S
3/4 X 1/2	0.090	0.105	3 X 2	0.478	0.846
1 X 1/2	0.090	0.105	3 X 2 1/2	0.548	0.983
1 X 3/4	0.098	0.116	4 X 1 1/2	0.630	1.241
1 1/4 X 1/2	0.112	0.120	4 X 2	0.656	1.270
1 1/4 X 3/4	0.117	0.126	4 X 2 1/2	0.706	1.370
1 1/4 X 1	0.125	0.157	4 X 3	0.748	1.450
1 1/2 X 1/2	0.154	0.204	5 X 2	1.050	2.230
1 1/2 X 3/4	0.156	0.210	5 X 2 1/2	1.180	2.250
1 1/2 X 1	0.170	0.219	5 X 3	1.200	2.270
1 1/2 X 1 1/4	0.195	0.263	5 X 4	1.320	2.500
2 X 3/4	0.214	0.298	6 X 2 1/2	1.350	2.740
2 X 1	0.237	0.322	6 X 3	1.500	3.040
2 X 1 1/4	0.258	0.352	6 X 4	1.620	3.300
2 X 1 1/2	0.273	0.372	6 X 5	1.750	3.570
2 1/2 X 1	0.349	0.630	8 X 4	2.560	5.100
2 1/2 X 1 1/4	0.394	0.640	8 X 5	2.700	5.400
2 1/2 X 1 1/2	0.396	0.661	8 X 6	2.850	5.710
2 1/2 X 2	0.432	0.680	10 X 5	3.300	8.210
3 X 1	0.408	0.716	10 X 6	3.870	8.780
3 X 1 1/4	0.430	0.775	10 X 8	4.210	9.580
3 X 1 1/2	0.444	0.783	12 X 6	5.730	12.400

About Us

Established in August 2005, **SUPERINOX PIPE INDUSTRY SDN. BHD.**, a member of **TATT GIAP GROUP BHD.**, is one of the leading manufacturers of Welded Austhenitic Stainless Steel Pipes in South East Asia, under the trade brand name **SUPERINOX**.

SUPERINOX operates at Prai Industrial Zone, Penang, Malaysia which is near vicinity to the North-South Highway, Penang Port and Penang International Airport.

SUPERINOX manufactures high value-added welded stainless steel pipes of sizes 3/8" to 16", with an annual production capacity of 18,000 metric tonnes to meet the market demands.





SUPERINOX™

TUBES & PIPES

Contact Us

SUPERINOX PIPE INDUSTRY SDN. BHD.


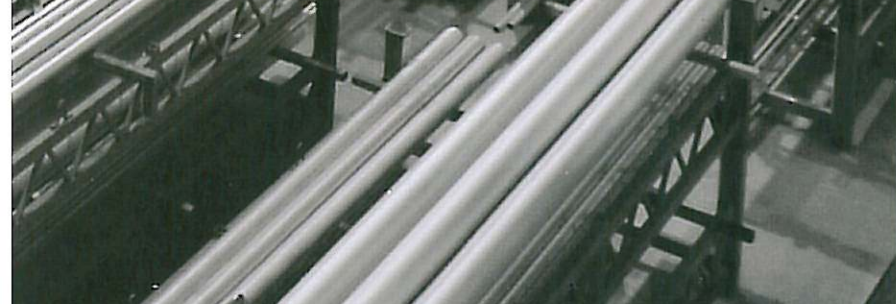




No. 1617, Lorong Perusahaan Maju 6,
Prai Industrial Estate IV,
13600 Prai, Penang, Malaysia.
Tel: (604) 502 1155 | Fax: (604) 502 1100

Exporter :

SUPERINOX INTERNATIONAL SDN. BHD.

Plot 33 Jalan Perusahaan Bukit Minyak,
Bukit Minyak Industrial Park,
14000 Bukit Mertajam, Penang, Malaysia.
Tel: (604) 507 0022 | Fax: (604) 507 0055
E-mail: superinox@tattgiap.com.my

www.superinoxtubes.com



Piping The World

A member of **TATT GIAP GROUP BHD.**